



The Santa Cruz County Child Care Planning Council
El Consejo de Planeación de Cuidado Infantil del Condado de Santa Cruz
www.childcareplanning.org

Local Planning Council Priority Setting Process for State Child Care and Preschool Funds(5-30-13)

History

In 1998, AB 1857-Escutia amended the Education Code, Section 8499.5, to include specific expanded mandates for Local Child Care Planning Councils (LPCs) (8499.5 (a) through (e)). One of these was an expansion of the existing LPC mandate to identify local priorities for the distribution of new state child care and development and preschool funding. The Education Code language specifies how LPCs are to conduct their work in order to identify priorities which will ensure that all the child care and preschool needs of the county are met to the greatest extent possible. The priorities are to be submitted annually to the California Department of Education and used by the Department to determine funding decisions.

The Priority Setting Process

Local Planning Councils develop priorities for funding using:

- Census zip code data as a baseline to estimate the number of children eligible for State Funded Services (and Head Start). Other pertinent local data, such as county growth factors, planning department data, or school district growth data, is then applied to achieve the most accurate estimate.
- CDE and other available zip code level data to determine the number and percent of eligible children served/not served by State Funded Services or Head Start.
- Based upon the information and data LPCs have gathered about their early care and education delivery systems, LPCs can conduct an environmental scan to determine what and where services are needed.

The data is then analyzed using the Priority 1, 2, and 3 number and percentage thresholds and methodology, described in Attachment 1, to assign county zip codes to Priority 1, 2, or 3 designations. Census zip code number 99999 representing P.O. Boxes were blended into local cities and unincorporated area zip codes.

These priorities are first reviewed and approved by the members of the Local Planning Council for each county, which is made up of parent consumers of child care, child care and preschool providers, public agency representatives and community agency representatives, who have been appointed by the County Board of Supervisors and the County Superintendent of Schools. The priorities are next made available for public review and finally reviewed and approved by the County Office of Education and County Board of Supervisors at public hearing as prescribed in State regulations.



The Santa Cruz County Child Care Planning Council
El Consejo de Planeación de Cuidado Infantil del Condado de Santa Cruz
www.childcareplanning.org

Explanation of Programs

CSPP Contracts include: State funded preschool and Head Start programs that serve 3 to 5 year olds. These are school readiness programs.

General Child Care/Needs Based Care includes: CCTR, Full Day CSPP, CMIG, Migrant Head Starts, CA Family Child Care Networks, CAPP, Stages 1, 2, and 3. This is full day, needs based child care for families who are either working or going to school, serving children 0 to 12 years of age.

There are a lot of detail and variations in the administration of the programs and funding. For the purposes of the charts and the priorities report programs have been grouped together into these two categories.

Local Planning Council (LPC) County Priorities Report Form

Return To:

Local Planning Council Consultant
Child Development Division
1430 N Street, Suite 3410
Sacramento, CA 95814
Due Date: May 30, 2013


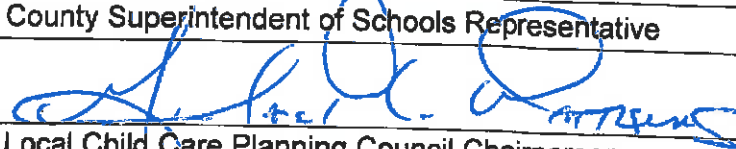
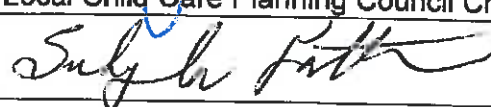
Please complete all the information requested below:

County Name: Santa Cruz County	LPC Coordinator Name and Telephone Number: Diane Oyler, 831-466-5822
-----------------------------------	---

The LPC hereby certifies that the priorities as indicated below have been prepared and reviewed in accordance with Education Code requirements. Please check off all boxes that apply.

- The priorities submitted to CDD in 2013 are still valid, no change is needed, and spreadsheet(s) are attached for both CCTR and CSPP
- The priorities have been revised for 2013 and spreadsheet(s) are attached for both CCTR and CSPP.
- The LPC used Option 1 to establish priorities 1, 2, and 3.
- The LPC used Option 2 to establish priorities 1, 2, and 3.
- The LPC used Option 3 for Priority 3.
- The LPC used Option 4 for Priority 3.

SIGNATURES*

County Board of Supervisors Representative	Telephone Number	Date
	831-454-2200	6/11/13
County Superintendent of Schools Representative	Telephone Number	Date
	831-466-5900	5-10-13
Local Child Care Planning Council Chairperson	Telephone Number	Date
	831-459-3013	5-9-13

**Santa Cruz County General Child Care and Development LPCs County Priorities
FY 2012-2013**

County Number	Zip Code	LPC
44	95003	1
44	95005	1
44	95006	1
44	95007	1
44	95010	1
44	95018	1
44	95019	1
44	95060	1
44	95062	1
44	95065	1
44	95076	1
44	95017	2
44	95066	2
44	95073	2
44	95033	3
44	95064	3

All zip codes for the county are listed and given a corresponding LPC priority ranking of 1, 2, or 3.

Most zip codes for the county are listed and given a corresponding LPC priority ranking of 1 or 2. All remaining (non-listed) zip codes are designated as LPC Priority 3.

Most zip codes for the county are listed and given a corresponding LPC priority ranking of 1, 2, or 3. All remaining (non-listed) zip codes are given NO PRIORITY and will not be funded.

Signatures:

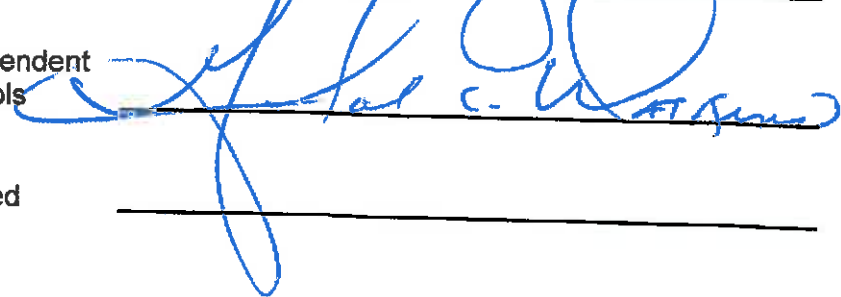
LPC
Chairperson



Board of
Supervisors
Representative



County
Superintendent
of Schools



Date
Submitted

Table 1
Analysis of CSPP Priorities for 2013
Child Care Planning Council of Santa Cruz

Zip Code	City	# of Children that Qualify for CSPP	CDD Enrolled 3-5	Head Start 3-5 PT	TOTAL 3-5 Served	% Qualified Children Served	Number of Children NOT Served	% of Children NOT Served	Priority 1 (40% un-served & more than 150)	Priority 2 (25% un-served & more than 75)	Priority 3 (25% un-served & more than 50)	Priority 3 - All the rest of zip codes in county
95003	Aptos/Rio Del Mar/ Seacliff/Seascape	148	33	18	51	34%	97	66%	√			
95005	Ben Lomond	36	1		1	3%	35	97%				√
95006	Big Basin/ Boulder Creek	45				0%	45	100%				√
95007	Brookdale	1				0%	1	100%				√
95010	Capitola	103		12	12	12%	91	88%		√		
95017	Davenport	3	7		7	214%	(4)	-114%				√
95018	Felton/Lompico	51	20	3	23	45%	28	55%			√	
95019	Freedom	260	37	70	107	41%	153	59%	√			
95033	Santa Cruz/ Los Gatos	30				0%	30	100%				√
95060	Santa Cruz	175	94	80	174	100%	1	0%				√
95062	Santa Cruz	328	153	46	199	61%	129	39%		√		
95064	Santa Cruz	21	17		17	80%	4	20%				√
95065	Santa Cruz	48	1	17	18	38%	30	62%				√
95066 (1)	Santa Cruz/ Scotts Valley	71		7	7	10%	64	90%			√	
95073	Soquel	80		15	15	19%	65	81%			√	
95076	Watsonville/ Corralitos/ La Selva Beach/Pajaro/ Royal Oaks	1,870	575	403	978	52%	892	48%	√			
	Totals	3,270	938	671	1,609	49%	1,661	51%	NA	NA	NA	NA

(1) ZIP code 95041 is included in 95066. This area includes Scotts Valley and Mt. Herron.
 *2008 - 2012--\$5 million in cuts to child care funding represents high need throughout Santa Cruz County, 2013-2018 Child Care Planning Council Master Plan.
 Sources: US Census; Child Care Planning Council of Santa Cruz County; Nilsson Consulting. Updated 11.13

Table 2
Analysis of General Child Care Priorities for 2013
Child Care Planning Council of Santa Cruz County

Zip Code	City	# of Children 0-12 that Qualify for CCTR	General Child Care	CWD Stage 1	TOTAL Enrolled	% Qualified Children Served	Number of Children NOT Served	% of Children NOT Served	Priority 1 (40% un-served & more than 200)	Priority 2 (25% un-served & more than 100)	Priority 3 (25% un-served & more than 50)	Priority 3 - All the rest of zip codes in county
95003	Aptos/Rio Del Mar/Seacliff/Seascape	702	49	8	57	8%	645	92%	✓			
95005	Ben Lomond	155	2	3	5	3%	150	97%		✓		
95006	Boulder Creek/Big Basin	206	7	11	18	9%	188	91%		✓		
95007	Brookdale	7		2	2	30%	5	70%				✓
95010	Capitola	430	19	10	29	7%	401	93%	✓			
95017	Davenport	14		1	1	7%	13	93%				✓
95018	Felton/Lompico	229	5	11	16	7%	213	93%	✓			
95019	Freedom	1,041	114	15	129	12%	912	88%	✓			
95033	Santa Cruz/ Los Gatos	135				0%	135	100%		✓		
95060	Santa Cruz	1,381	49	45	94	7%	1,287	93%	✓			
95062	Santa Cruz	1,395	44	43	87	6%	1,308	94%	✓			
95064	Santa Cruz	88	76	2	78	88%	10	12%				✓
95065	Santa Cruz	213	8	4	12	6%	201	94%	✓			
95066 (1)	Santa Cruz/ Scotts Valley	365	21	5	26	7%	339	93%	✓			
95073	Soquel	331	5	16	25	8%	306	92%	✓			
95076	Watsonville/ Corralitos/La Selva Beach/Pajaro/ Royal Oaks	7,739	1,092	158	1,250	16%	6,489	84%	✓			
	Outside Co.				26							
	Totals	14,432	1,495	334	1,829	13%	12,603	87%	NA	NA	NA	NA

(1) ZIP code 95041 is included in 95066. This area includes Scotts Valley and Mt. Hermon.
 *2008 - 2012 - \$5 million in cuts to child care funding represents high need throughout Santa Cruz County, 2013-2018 Child Care Planning Council Master Plan.
 Sources: US Census; Child Care Planning Council of Santa Cruz County; Nilsson Consulting. Updated 11.13



2013 Child Care Expansion Priority Report List of Local Considerations

- Supportive county data provided builds a strong case for additional funding for subsidized child care services. When additional state funding becomes available Priority rankings will assist in determining which zip code areas have the greater need.
- The development of the Priority rankings process was administered as prescribed by the state. To make the analysis relevant the Child Care Planning Council used local considerations to identify target areas of need, such as, rural isolation, migrant communities with high risk factors, and zip codes that do not have any state funded programs. (Stated in table 3).
- Using *First 5 Santa Cruz County's Combined Risk Factor Geo-map* (see Attachment 7), zip codes with medium-high and high levels of risk factors changed the Priority ranking from 3 or 2 to 2 or 1 in zip codes 95005, 95006, 95007, 95010, 95017, 95018, 95065, and 95073.
- *First 5's Combined Risk Factors Geo-map* includes indicators of vulnerability based on: Income and Employment, Teen Parents, Child Welfare, Education and English Literacy.

Santa Cruz County Combined Zip Code Priorities for 2013

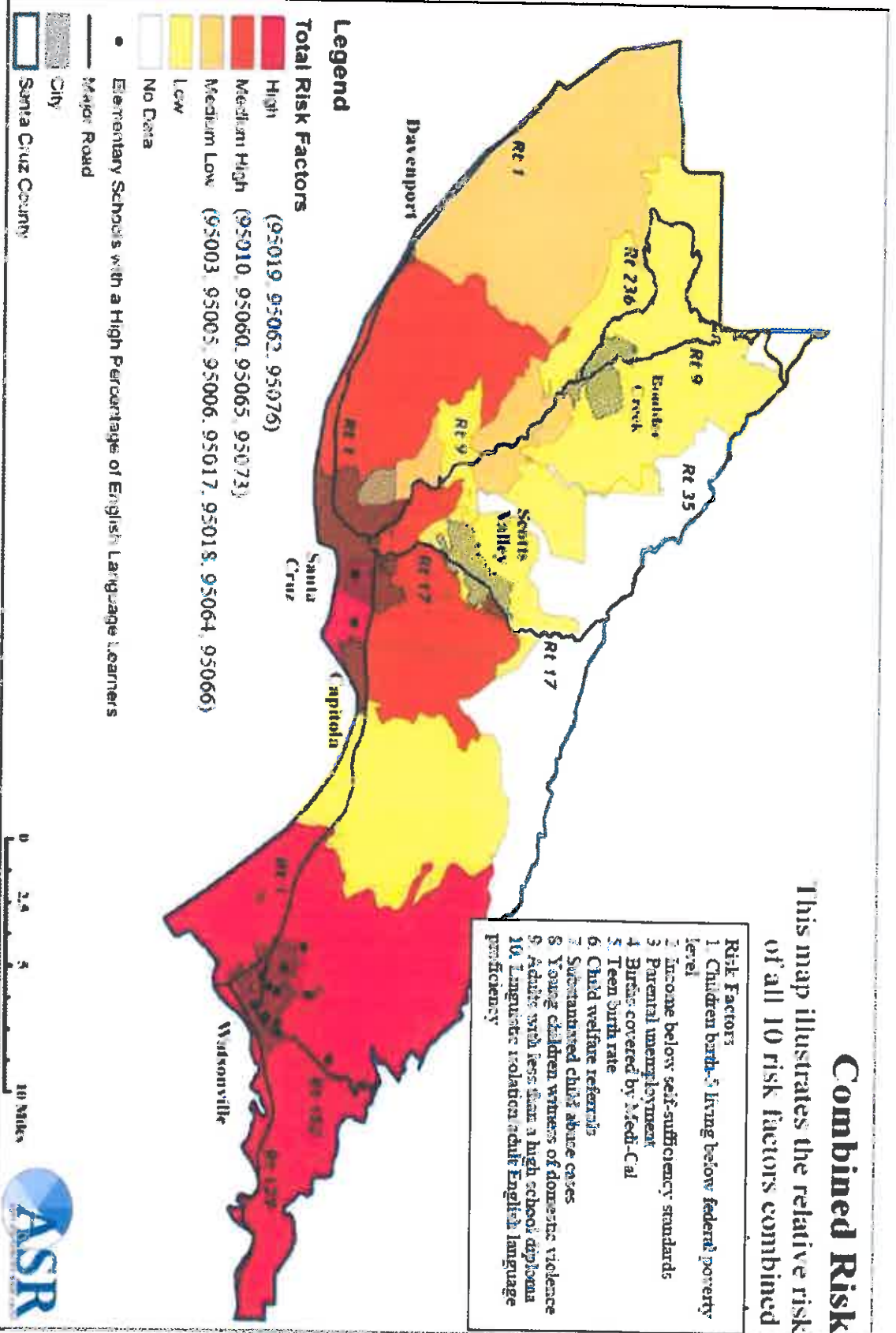
BOS District	All County Zip Codes	City	CSPP Priorities	General Child Care Priorities	2013 Local Priority Rankings	Local Data Considerations
1	95062	Santa Cruz	2	1	1	
1	95065	Santa Cruz	3	1	1	Medium-high risk factors according to First 5 Combined Risk Factor Geo-map.
1	95073	Soquel	2	1	2	Medium-high risk factors according to First 5 Combined Risk Factor Geo-map.
1	95033	Santa Cruz/Los Gatos	3	2	3	
2	95003	Aptos/Rio Del Mar/Seacliff/Seascap	1	1	1	
2	95010	Capitola	2	1	1	No subsidized child care exists in city limits.
3	95060	Santa Cruz	3	1	1	
3	95017	Davenport	3	3	2	Isolated population and migrant community with high risk factors according to First 5 Combined Risk Factor Geo-map.
3	95064	Santa Cruz	3	3	3	
4	95019	Freedom	1	1	1	
4	95076	Watsonville/Corralitos/ La Selva Beach/Pajaro/ Royal Oaks	1	1	1	
5	95005	Ben Lomond	3	2	1	Rural isolation with pockets of high need.
5	95006	Boulder Creek/Big Basin	3	2	1	Rural isolation with pockets of high need.
5	95007	Brookdale	3	3	1	Rural isolation with pockets of high need.
5	95018	Felton/Lompico	2	1	1	Rural isolation with pockets of high need.
5	95066	Santa Cruz/Scotts Valley	3	1	2	

*2008 - 2012 5 million dollars in cuts to child care funding represents high need throughout Santa Cruz County, 2013-2018 Child Care Planning Council Master Plan.
Sources: U.S. Census, Child Care Planning Council of Santa Cruz County, First 5 Santa Cruz County Combined Risk Factor Geo-map, and Nilsson Consulting. Updated 11.13

Combined Risk

This map illustrates the relative risk of all 10 risk factors combined

- Risk Factors:**
1. Children birth-5 living below federal poverty level
 2. Income below self-sufficiency standards
 3. Parental unemployment
 4. Births covered by Medi-Cal
 5. Teen birth rate
 6. Child welfare referrals
 7. Substantiated child abuse cases
 8. Young children witnesses of domestic violence
 9. Adults with less than a high school diploma
 10. Linguistic isolation adult English language proficiency



This map was provided courtesy of Figure 5 Santa Cruz County. More information regarding this geospatial project can be viewed at their website: www.firstsource.org